

Heretaunga College (251)

Enrolment Scheme

The guidelines for development and operation of enrolment schemes are issued under section 11G (3) of the Education Act 1989 for the purpose of describing the basis on which the Secretary's powers in relation to enrolment schemes will be exercised.

Purpose and Principles

- A. To avoid overcrowding or the likelihood of overcrowding at the school;
- B. To ensure that the selection of applicants for enrolment at the school is carried out in a fair and transparent manner; and
- C. To enable the Secretary to make best use of existing networks of State schools.

In achieving its purpose, an enrolment scheme must, as far as possible, ensure that:

- A. The scheme does not exclude local students: and
- B. No more students are excluded from the schools than is necessary to avoid overcrowding.

Home Zone

All students who live within the home zone described below shall be entitled to enrol at the school.

The Enrolment scheme home zone includes addresses on both sides of boundary roads unless otherwise stated

The northern boundary runs from the summit of Rimutaka Hill north in a straight line to Marchant Road including Kiwi Ranch Road. It continues from the summit south west in a straight line to Colletts Road.

Akatarawa Road up to 2420 Akatarawa Road and below are in zone.

The boundary continues up to the summit of Akatarawa Road then in a straight line South to SH2, it then runs along SH2 to a point opposite Golders Road. The boundary then cuts across McLeod Street between numbers 90 and 88. Number 90 McLeod Street is not in zone but number 88, 88A, and 56 are in zone. The boundary then runs south along Golders Rd to Fergusson Drive. Only even numbers of Golders Rd are in zone.

The Boundary then runs South West along Fergusson Drive, until the intersection with Whakatiki Street where it runs north along Whakitiki Street until Shakespeare Avenue. Only odd numbers on Whakltiki Street are in zone.

The boundary runs south west along Shakespeare Avenue until Milton Street. Odd number residences in this section of Shakespeare Avenue are in zone. The boundary travels along Milton Street to Fergusson Drive. Only even number residences in Milton Street are in zone. All residences in Byron Street, Argyle Grove and Hildreth Street are in zone.

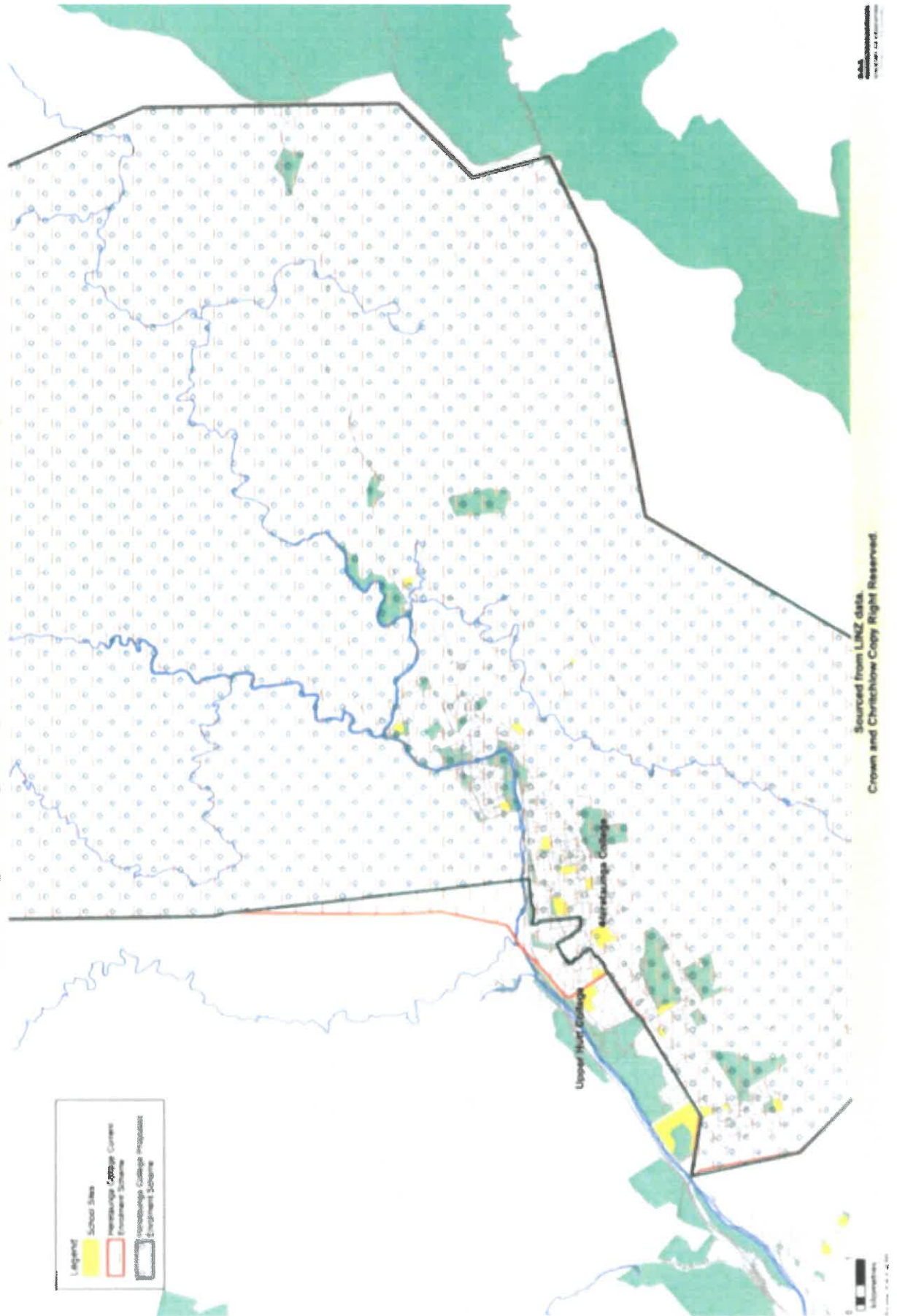
The Boundary then runs South West along Fergusson Drive. Only even numbers on Fergusson Drive are in zone. The boundary intersects where Fergusson Drive intersects SH2 and Western Hutt Road and Eastern Hutt Road at the Silverstream Bridge.

Silverstream, Pinehaven and Mangaroa Valley to the northern end of Colletts Road, Whitemans Valley and all lateral roads off it are in zone.

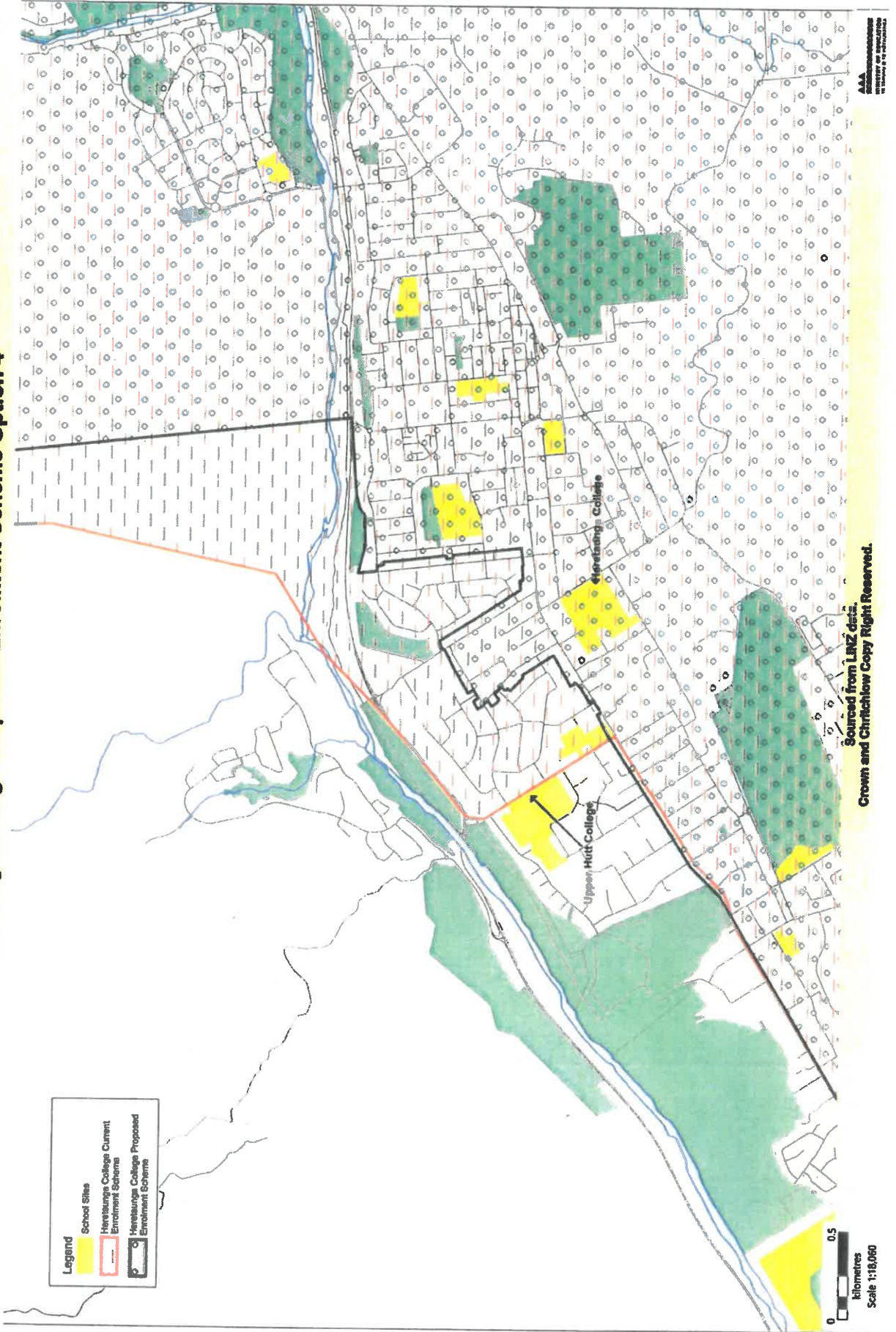
Silverstream to Blue Mountains Road and all lateral roads off it, up to the end of Kakariki Way are in zone.

Home Zone Boundaries

Heretaunga College Proposed Enrolment Scheme Option 4



Heretaunga College Proposed Enrolment Scheme Option 4



Proof of residence of a property within the home zone will be required (for example a copy of a utility bill with the name of a parent or guardian and an address within the home zone, covering the date of enrolment or earlier). Where a property has two or more entrances on different streets, or where the actual address of a property is in dispute, only the rateable address as recognised by the local City Council will be considered to determine if the property is in or out of zone.

Each year, applications for enrolment in the following year from in-zone students will be sought by a date which will be published in a daily or community newspaper circulating in the area served by the school. This will enable the Board to assess the number of places which can be made available to students who live outside the home zone.

Out of Zone Enrolments

Each year the board will determine the number of places which are likely to be available in the following year for the enrolment of students who live outside the home zone. The board will publish this information by notice in a daily or community newspaper circulating in the area served by the school. The notice will indicate how applications are to be made and will specify a date by which all applications must be received.

Applications for enrolment will be processed in the following order of priority:

First Priority	This priority category is not applicable at this school because the school does not run a special programme approved by the Secretary.
Second Priority	Will be given to applicants who are siblings of current students.
Third Priority	Will be given to applicants who are siblings of former students.
Fourth Priority	Will be given to applicants who are children of former students.
Fifth Priority	Will be given to applicants who are either a child of an employee of the board of the school or a child of a member of the board of the school.
Sixth Priority	Will be given to all other applicants.

If there are more applicants in the second, third, fourth, fifth or sixth priority groups than there are places available, selection within the priority group will be by a ballot conducted in accordance with instructions issued by the Secretary under Section 11G(1) of the Education Act 1989.

Parents will be informed of the date of any ballot by notice in a daily or community newspaper circulating in the area served by the school.

Applicants seeking second or third priority status may be required to give proof of a sibling relationship.

	Board of Trustees	Ministry of Education
Signed		
Name		
Position		
Date		