

Heretaunga College (251)
Enrolment Scheme
Effective: 18th October 2021

The guidelines for development and operation of enrolment schemes are issued under Schedule 20, Clause 3 (3) of the Education and Training Act 2020 for the purpose of describing the basis on which the Secretary's powers in relation to enrolment schemes will be exercised.

Home Zone

All students who live within the home zone described below shall be eligible to enrol at the school. (All numbers are inclusive).

The northern boundary runs from the summit of Remutaka Hill north in a straight line to Marchant Road including Kiwi Ranch Road. It continues from the summit south west in a straight line to Colletts Road.

Akatarawa Road up to 2420 Akatarawa Road and below are in zone.

The boundary continues up to the summit of Akatarawa Road then in a straight line South to SH2, it then runs along SH2 until Gibbons Street. The scheme then runs West along McLeod Street, 1-63 odd and 18-88 even McLeod Street are in zone. The scheme runs down Clyma Street (all addresses are in zone). Golders Road is not in zone. Then from Clyma Street to Fergusson Drive.

Fergusson Drive 711 – 953 odd and 414 – 844 even are in zone. At 414 Fergusson Drive the scheme then runs South West down Sutherland Avenue (All Addresses are in zone). The scheme then continues along Messines Avenue, 1-17 Messines Avenue is in zone.

The scheme then runs south across to Whitemans Valley Road. 8 – 528 even and 7 – 615 odd Whitemans Valley Road are in zone. All addresses on Katherine Mansfield Drive, Margaret Mahy Drive and Janet Frame way are in zone.

The scheme then continues South to the Upper Hutt City/South Wairarapa District boarder along the centre of the Remutaka Ranges. The scheme runs north west along this boarder to the Remutaka Hill Road Summit.

Home Zone Boundaries

Where a property has two or more entrances on different streets, or where the actual address of a property is in dispute, only the rateable address as recognised by the local City Council will be considered to determine if the property is in or out of zone.

Special Programmes

This priority category is not applicable at this school because the school does not run a Special programme approved by the Secretary.

Out of Zone Enrolments

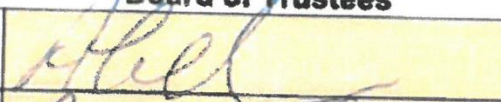

Each year the Board of Trustees will determine the number of places which are likely to be available in the following year for the enrolment of students who live outside the home zone. The Board will publish this information by notice in a daily or community newspaper circulating in the area served by the school. The notice will indicate how applications are to be made and will specify a date by which all applications must be received.

Applications for enrolments will be processed in the following order of priority:

- First Priority** This priority is not applicable at this school because the school does not run a special programme approved by the Secretary for Education.
- Second Priority** will be given to applicants who are siblings of current students.
- Third Priority** will be given to applicants who are siblings of former students.
- Fourth Priority** will be given to any applicant who is a child of a former student of the school.
- Fifth Priority** will be given to any applicant who is either a child of an employee of the board of the school or a child of a member of the board of the school.
- Sixth Priority** will be given to all other applicants.

If there are more applicants in the second, third, fourth, fifth or sixth priority groups than there are places available, Selection within the priority group will be by ballot conducted in accordance with instructions by the Secretary, under Schedule 20, Clause 3 (1) of the Education and Training Act 2020. Parents will be informed of the date of any ballot by notice in a daily or community newspaper circulating in the area served by the school.

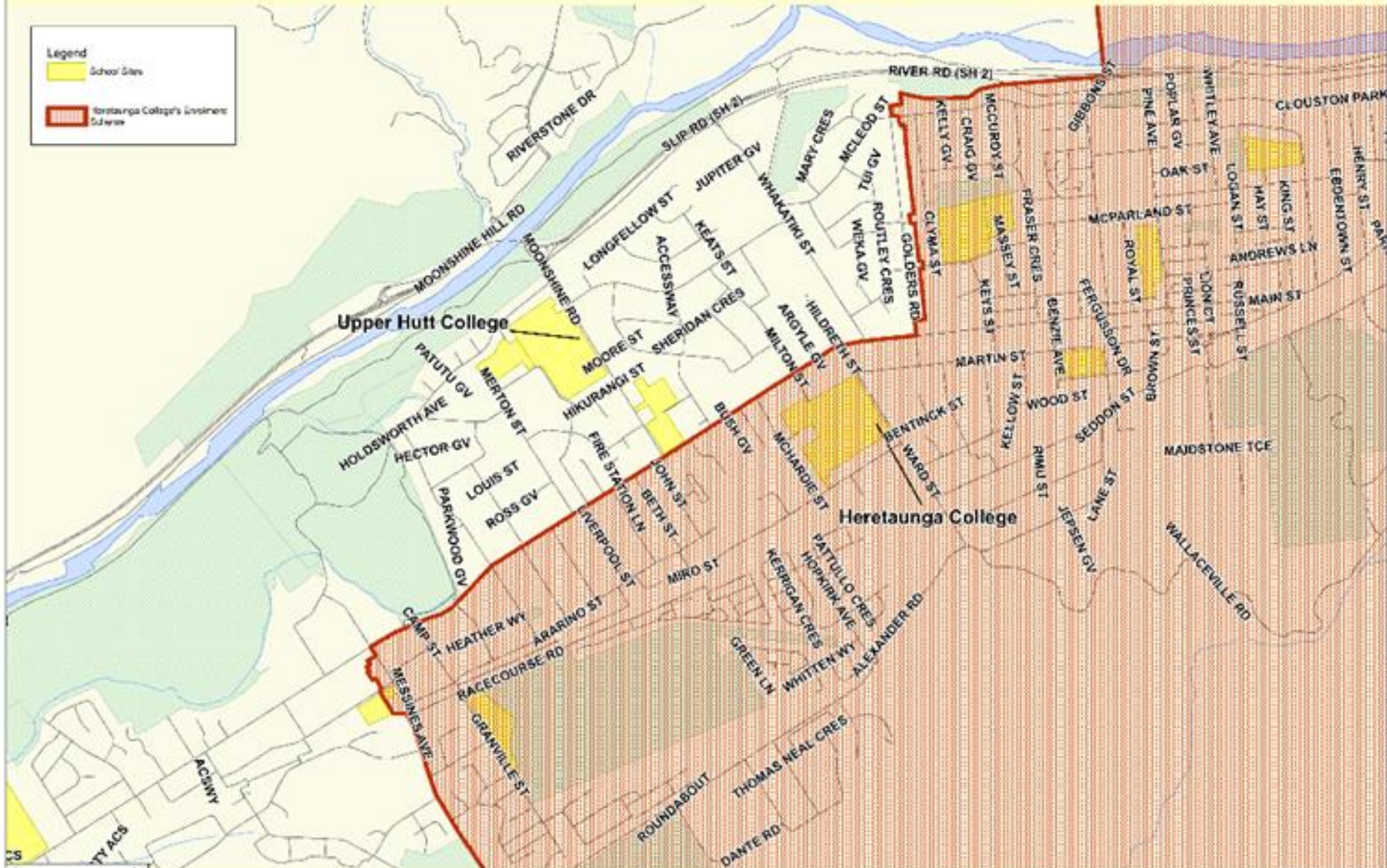
Applicants seeking second or third priority status may be required to give proof of a sibling relationship.

	Board of Trustees	Ministry of Education
Signed		
Name	Ara Te Pohu	Lisa Rangiaho
Position	Board Chairperson	Manager Education
Date	9/8/2021	11/08/2021

Heretaunga College's Enrolment Scheme

Legend

- School Sites
- Heretaunga College's Enrolment Scheme



Printed April 2021
 Land information sourced from LINZ data.
 Crown and Critchlow Copy Right Reserved.



Heretaunga College's Enrolment Scheme

